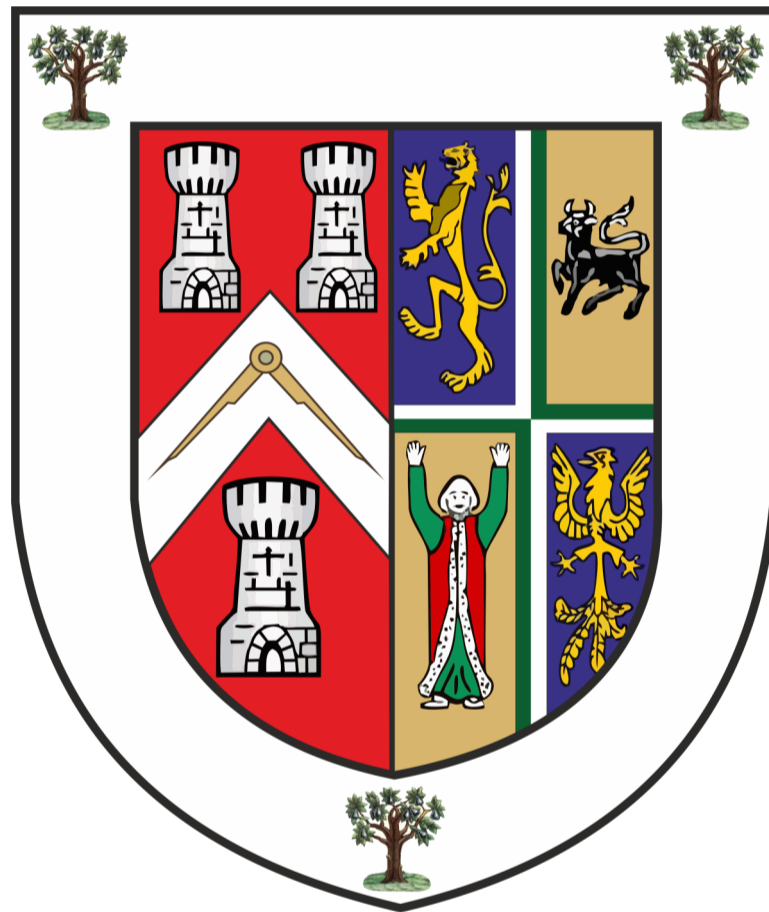


# Provincial Grand Lodge of Worcestershire

Antient Free and Accepted Masons



**R.W. Brother STEPHEN JOHN WYER**  
Provincial Grand Master

**Provincial Reports  
2023**



**Forward  
By**

**R.W. Brother STEPHEN JOHN WYER**

Provincial Grand Master

I am delighted to welcome you all to this Annual meeting of Provincial Grand Lodge.

The reports in these pages describe a Province which is active in engaging both with its own members and with the wider community. My hope is that we shall continue to be happy ourselves and communicate happiness, demonstrating the positive impact which our wonderful Order continues to have on Society in general.

My thanks go to all my acting officers for their continuing hard work and support. We are fortunate indeed to have so many volunteers who give of their time freely in the service of our organisation.

Thank you for your support and enjoy the day.

Stephen



## SECRETARY REPORT

This is my first report as Provincial Grand Secretary and I would first like to pay tribute to the work done by my predecessor Iain Sharratt, for and on behalf of the province. He has guided the province through unprecedented times with the pandemic and all the trials and challenges that posed. He has modernised the telephone and computer systems in the PGL office and continues to support the province as Provincial Grand Registrar and Hermes champion.

It is now time to build on our foundations and move into the future.

In January this year, the Pro Grand Master Jonathan Spence attended the meeting of 'Worcestershire Installed Masters Lodge' where he outlined his seven year plan. This was a very refreshing and positive message for the future, and the province. We will be rolling out the strategy to all lodges in the new season. Since our last Provincial Grand Lodge meeting we have lost members through death and resignation. We have lost three lodges this year, but many of those members have re-joined other lodges. On a positive note, we are beginning to re-build with many lodges welcoming new candidates.

The communications team have worked hard to build connections with the local press and they continue to increase membership through the social media platforms of Facebook, Twitter and Instagram. The website and Worcester source have been very effective tools of communication within the province. The UGLE digital marketing campaign was very successful tripling the number of enquiries.

The membership team have purchased two new gazebos and they have attended many public events including the regatta. They have also attended lodge hall open days to support the heritage weekend initiative.

The 'members pathway' has been successful in providing advice and guidance for lodge secretaries. They have held several zoom sessions with more to come.

The PGM hosted a new members dinner at Rainbow Hill in March, which was attended by 80 people, over 30 being new initiates.

We have now reached the end of the 'Festival 2022' where I know many of you have worked very hard over several years to make it the success it has been. We now have the opportunity to turn our attention towards our own local charities many of which are struggling at this time.

Following the festival, W Bro Patrick V Firminger and W Bro John H Crowther have decided to step down as APGM's. They have both worked tirelessly supporting the province over the past six years. We thank them for their commitment and hard work, and we wish them well for the future.

W Bro The Rev Justin T Parker and W Bro Paul L Wong, will be appointed and invested as APGM's at the Provincial Grand Lodge meeting and I know they will add excitement and infectious energy to our meetings. A great achievement, congratulations to you both.

At the recent annual investiture of UGLE the following received First Appointments and Promotion in Grand rank and we congratulate them all.

### **1st Appointments to Grand Rank**

- Brody Swain, Grand Pursuivant
- Paul L. Wong, PAGDC
- David L. Dey, PAGDC

### **Promotions**

- Lt Col Michael C. A. CASEMAN-JONES, TD, to SGD
- Keith M. Evans, to PGSwdB

I thank all the staff at the PGL office for their hard work and support and also the lodge secretaries for their dedication and timely responses.

James FP Mulligan

Provincial Grand Secretary

**REGISTRAR REPORT**  
**1ST JANUARY 2022– 31ST DECEMBER 2022**

Right Worshipful Provincial Grand Master and Brethren, I present the Registrar's Report for the year ending 31st December 2022. Data received from the 101 Craft Lodges of the Province.

The Province is slowly recovering from the Pandemic despite an increase of resignations and deaths recently. The Province is currently benefitting from an increase in Initiates joining the fraternity and noticeably from those Lodges that have engaged in the Pathway Scheme. In addition to these figures there are approximately 24 Form "P" applications pending approval, but due to mistakes, or that they are incomplete, these will not be approved by UGLE until they are rectified. This causes additional work and delays. I kindly ask that Secretaries and Treasurer's give their care and attention to detail when completing these forms and the Lodge Annual Return accurately, so that candidates can progress in the craft once initiated.

Hermes is still temporarily on hold pending a review of the system.

W Bro Iain Sharratt, PAGDC

Provincial Grand Registrar

**1ST JANUARY 2022– 31ST DECEMBER 2022**

	<b>31/12/2022</b>	<b>31/12/2021</b>
<b>INITIATES</b>	<b>96</b>	<b>36</b>
<b>JOINING MEMBERS</b>	<b>104</b>	<b>23</b>
<b>RE-JOINERS</b>	<b>14</b>	<b>3</b>
<b>FOREIGN JOINERS</b>	<b>1</b>	<b>2</b>
<b>DECEASED</b>	<b>57</b>	<b>37</b>
<b>RESIGNATIONS</b>	<b>137</b>	<b>81</b>
<b>EXCLUSIONS</b>	<b>5</b>	<b>6</b>
<b>ELECTED HON. MEMBERS</b>	<b>11</b>	<b>8</b>
<b>TOTAL SUBSCRIBING MEMBERS inc MULTI- PLE MEMBERSHIPS</b>	<b>2687</b>	<b>2815</b>
<b>CRAFT MEMBERS IN THE PROVINCE</b>	<b>2131</b>	<b>2222</b>

## **COMMUNICATIONS OFFICER REPORT**

The communications team have built up a very good relationship with local press and continue to be featured regularly. Examples include the donation of the Arrive Alive vehicle, the summer Regatta, providing local families with entertainment with the charity Contact, and AED (Automated External De-fibrillator) donations to Worcestershire Police.

We also worked with Newsquest last year and sponsored the Healthcare Employer category in the Worcestershire Health & Social Care Awards. In addition to the PGM recording a short video piece announcing the winner, the sponsorship included being featured regularly on all Newsquest social media platforms, in Living Magazine and in Berrows Worcester Journal. Working closely with Newsquest has enabled us to create a closer relationship with the organisation who produce many of our local newspapers and provided the opportunity to celebrate Freemasonry across the Province.

Our social media platforms (Facebook, Twitter and Instagram) are well supported with followers increasing steadily. Always mindful of speaking in language that appeals to non-masons, it is clear that good quality photographs are the key to a successful post. Local stories also tend to be more successful than national. Our advent calendar posts in 2022 looked back at a wonderful year for Worcestershire Freemasonry and were a good example of both photographs and local stories proving very popular.

Our Provincial website looks attractive and is easy to navigate, however we would like to encourage more of our lodges and members to share their stories and news with our Webmaster. The Source continues to be our 'Jewel in the Crown' as far as Worcestershire comms is concerned and we are delighted to have produced a printed edition to mark this very special meeting.

W. Bro. Brody Swain G. Purs

Provincial Communications Officer

## **MENTOR REPORT**

Right Worshipful Provincial Grand Master, it has yet again proved an honour and a pleasure to represent your province as Provincial Grand Mentor. I have managed to attend the initiation of some of your new members and it was an added bonus to help with the ceremony of one or two.

Again the New Members Pathway has taken up some of my time and the new version will be so much easier for any lodge wishing to use it, guided on how to increase and maintain their membership and have a consistent map for future use. This was delivered in four zoom sessions to a good number of lodges with questions and answers afterwards. It is planned to have two face-to-face presentations during the year.

I continue to receive queries from some lodge mentors, which always prove interesting, and we all seem to get our daily advancement in the answers.

Your new members dinner was held at Rainbow Hill on the 30th March, there were 79 booked in of which 31 were new members, we had a couple of great speakers and a lively Q&A session. As always I had great help from the Provincial Grand Stewards.

My thanks to the team in the provincial office especially Mrs. Christine Gaunt for putting up with my constant phone enquiries. As this will be my last report before handing over to my successor I have to thank you for the opportunity the last five years as Provincial Mentor has given me and wish my successor as much enjoyment as it has afforded me.

Chris Overall PPrJGW

Provincial Grand Mentor

## MEMBERSHIP REPORT

With the development of recruitment initiatives the number of enquiries for membership through the Province has been growing each year.

### **The Internet**

The internet is by far the largest source of enquiries. In 2022 we received 257 enquiries and after sending out information packs and screening each enquiry 71 were successfully passed to lodges. The volume of internet enquiries was helped with the UGLE Digital marketing campaign, this was on the Facebook social media platform. It ran from September to December where we received triple the number of enquiries than usual.

Once an enquiry has been approved, the information is passed to a membership contact which have at each of the Halls in our Province. They meet for a tour of the hall to establish which will be the most suitable lodge to join. The details are then passed to the lodge.

It is essential that the chosen lodge follows the Members Pathway as the candidate is not known to any of the members. They must continue to meet the candidate and invite him to lodge social events so that the members get to know him and importantly he gets to know the members. The candidates from the internet are aware that it will take approx. 6 to 9 months to join a lodge.

### **In Reach Out Reach**

This year the Province invested in a large sign written Gazebo and a series of pull up information banners to be used at Fetes, Shows and lodge events for marketing purposes. A very hard working team attended The Worcester Show, Pershore Plum festival, The Regatta, Tenbury Show and at Shirley Park for the Commonwealth games baton relay. All day they spoke to the public about freemasonry, giving out brochures and literature explaining what freemasonry is and what we do. This resulted in several candidates and re joining members at each of the shows.

### **Hall Open Days**

One of our biggest assets is our Halls, every centre should organise an open day once a year. The Kings Heath Open Day was linked to the 'Heritage Weekend' initiative. They had a steady flow of people looking around the Hall throughout the day.

### **Members Pathway**

The lodges which already follow the Members Pathway understand its benefits. It provides a simple framework to help lodges to:

- Plan** Lodge and Membership Development
- Attract** New members
- Engage** With new and existing members to increase involvement and satisfaction and minimise losses due to resignation, cessation and exclusion.
- Retrieve** Finding ways to encourage those who have drifted away to re kindle their interest and re-join.

In October a series of five zoom presentations, each one focusing on one of the key parts was explained in detail. During May 2023, two live seminars will be presented at Evesham and Northfield Freemasons Halls which all lodges are encouraged to attend. We must remember that we are a Membership Organisation. It is the duty of all Members to promote freemasonry in a good light and to actively seek new members. Lodges should not solely rely on the Province to provide new candidates. The initiatives that UGLE and the Province running should be a top up for the recruitment initiatives that each lodge should be doing themselves.

Thank you to all the Brethren who are part of the Membership team, the telephone screeners, the Members Pathway Team, the Brethren who man the Gazebo at fetes and shows, the Hall contacts and the Office staff at Bromsgrove for all their help.

Michael J Dykes. PSGD

Assistant Provincial Grand Master

## **ALMONER REPORT**

### **Provincial Visitors**

As you are well aware, these volunteers are essential in the provision of Grants from the MCF, and indeed for the Reviews for those needing repeat grants.

We managed to hold a Visiting Volunteers seminar at the Provincial Offices .

Mike Martin the MCF Provincial engagement manager came up one evening ( 11th July 2022 ) and had an open ended discussion with the volunteers .

We have Stephenie Vaughan, Raj Schroff, Mike Muse, Brian Roberts, David Dey, Royston Foster, and myself as reserve.

### **Almoner Training**

Charles majored in this, - indeed he contributed heavily to the original Almoners handbook. Since then, the MCF and UGLE have produced an excellent on-line version, easily downloaded and/or printed off, and which I have sent by email to all Lodge and Chapter Almoners. (That doesn't mean they will read it! ) We have had several Zoom get togethers.

Our first Almoners Workshop was organized and planned for Sat April 20th, until Covid got in my way. Re-scheduled for the Evening of Wednesday 10th May, at Kings Heath, it included a presentation by me, on Handover, using the MCF portal, etc, by David Dey on the Visiting Volunteers role and by Chris Overall on Retention of Members , and the Almoners role . Fifteen attended, including Bob Vaughan and Jim Mulligan (Provincial Mark Almoner). I will send the presentations to all Almoners.

### **Communications**

Mark Keepax kindly wrote an article for the Source recently, and has now produced one about the Kings Heath Ladies Friendship Club . Mark is an Almoner, and both he and Brody are supportive.

### **Biennial Almoners Conference in Bristol , October 2022**

I attended this with Chris Overall, who found it very interesting and relevant. It will slot in nicely with his new MCF representative role.

Very packed with information, & also a chance to borrow good ideas from other Almoners.

### **MCF support over the past year:**

Much of this is ongoing; needs are reviewed yearly:

£58,337 for 17 Adults Daily Living Expenses (DLE),

£32,363 for DLE for 5 Adults and Children .

An Education grant of £1500,

6 Annual Scholarships £11,896 ,

Provision of Computer equipment for 2 Students ,

Provision of 3 stairlifts,

Medical care including dental treatment and a hip replacement (£13,000),

Domiciliary Respite care,

A Funeral grant of £4,200.

And, sundry other grants .

The MCF more than pays back our Festival Contribution.

W. Bro. Bill Tucker PPrGSwdB

Provincial Grand Almoner



## CHARITY REPORT

The Province continues to support many requests originating directly from a Charity, organisation, individual or from a Lodge. The requests are varied and reflect the needs of the community, they range from a few hundred pounds to grants of many thousands. The MCF continue to give financial support which has enabled the Province to make substantial grants to our local Foodbanks and to give much needed assistance to safeguarding the health of the community.

During the last twelve months a number of grants have been given to young people in particular to those Scouts and Guides raising funds to enable them to attend the World Jamboree to be held in South Korea in 2024. Further support has been provided to youth football teams, The Duke of Edinburgh Award Scheme, lifesaving equipment and assistance for a disabled child.

We donated to The Motor Neurone Association in memory of W. Bro Charles Gywnn and to the children's hospice "Acorns"

Particular note should be made of the donation of 20 AED units to the Police Forces to provide another layer of protection for anyone suffering a heart failure. Within days one of these units was on hand when a male suffered a cardiac arrest with a positive result. This donation like those to our local Foodbanks was "Match Funded" by the MCF.

The Provincial Relief Chest, E160, continues to assist Lodges in adding Gift Aid to Lodge collections increasing by 25% the amount the Lodge can donate to the Charity of their choice. The system now uses on-line technology which ensures that the Lodge donation can be making a real impact within days.

I must end by thanking the Lodge Charity Stewards for their continued support and hard work in making Freemasonry in the Community something we can all be proud of.

W Bro David Dey, PAGDC

Provincial Grand Charity Steward

## TREASURER REPORT

Provincial Grand Lodge suffered an increased deficit for the year compared to that experienced in 2021. The increase in Lodge dues made at the 2022 Annual Meeting doesn't come into effect until 1 January 2023 and thus has no impact on income in these accounts.

Income is reduced despite increases in interest rates and other sundry items but those increases are offset by the reduction in Lodge dues.

There are significant costs in 2022 which we did not have in previous years, notably the retirement of one Provincial Grand Master and the installation of his successor. The costs associated with that are shown separately as an Exceptional item as they are effectively "one off" costs.

Other costs that have increased are in office running expenses which have shown general increases across the board in parallel with what we see in the economy as a whole.

Included in Office expenses is depreciation which is new for 2022, refer below re the Balance Sheet. We also have a new larger cost in the "Recruitment initiative" which should bear fruit in the future.

The Balance Sheet has a new additional item "Office equipment" which creates the depreciation charge mentioned above. The Office equipment includes computer upgrade costs as well as equipment for the recruitment initiative and is being depreciated in equal instalments over three years.

Debtors relate to Lodge dues and are all in date and cash at bank remains healthy

Howard Painter JP BSc FCA

Provincial Grand Treasurer

**Provincial Grand Lodge of Worcestershire  
Income and Expenditure Account  
for the period 1 January 2021 to 31 December 2022**

	2022		2021	
	£	£	£	£
<b>INCOME</b>				
Lodge dues		29,105.80		33,575.60
Fees of Honour		2,265.00		1,045.00
Dispensations		340.00		140.00
Sales of byelaws/booklets etc		-		120.00
Investment income		2,336.58		1,435.10
Rent received		1,800.00		1,800.00
Surplus on Year Book		1,080.00		-
		<u>36,927.38</u>		<u>38,115.70</u>
<b>EXPENDITURE</b>				
Office expenses	38,459.59		28,565.23	
Annual meeting and Grand Lodge investiture	7,808.12		8,411.46	
Cathedral lunch (Service)	350.00		5,419.40	
New Members' Lunch	115.00		-	
Recruitment initiative	<u>2,367.84</u>		<u>411.00</u>	
		<u>49,100.55</u>		<u>42,807.09</u>
Deficit before Exceptional items		(12,173.17)		(4,691.39)
Exceptional items				
Provincial Grand Master Installation and Retirement		4,737.76		-
<b>(Deficit)/Surplus for the year</b>		<u>(16,910.93)</u>		<u>(4,691.39)</u>

**BALANCE SHEET  
AS AT 31 DECEMBER 2022**

	2022		2021	
	£	£	£	£
<b>FIXED ASSETS</b>				
Property at cost	5,000.00			5,000.00
Office equipment	<u>4,172.63</u>			<u>-</u>
		9,172.63		5,000.00
<b>CURRENT ASSETS</b>				
Debtors	23,087.32		32,510.01	
Cash at bank	139,009.4			
	<u>1</u>		<u>138,714.59</u>	
		162,096.73		171,224.60
<b>CURRENT LIABILITIES</b>				
Creditors		<u>(32,502.70)</u>		<u>(20,547.01)</u>
		<u>138,766.66</u>		<u>160,677.59</u>
<b>ACCUMULATED FUND</b>				
At 1 January 2020		155,677.59		160,368.98
(Deficit)/Surplus for the year		<u>(16,910.93)</u>		<u>(4,691.39)</u>
		<u>138,766.66</u>		<u>155,677.59</u>

H N Painter JP BSC FCA

April 2022

We have examined, without carrying out an audit, the Income and Expenditure Account and Balance Sheet of the Provincial Grand Lodge of Worcestershire for the year ended 31 December 2022 and certify that they are in accordance with the Books, records explanations produced to us.

JB Coxon

PC Band

Provincial Examiners

Bromsgrove

The Lesley and Ivy Pountney Bursary Fund

Statement of Financial Activities  
For the Year Ended 31 December 2022

	2022 £	2021 £
<b>Income</b>		
Investment income (net)	4,612.30	4,198.31
<b>Less: Expenditure</b>		
Grants	5,000.00	4,000.00
(Deficit)/Surplus for the year	<u>-387.70</u>	<u>198.31</u>

**Balance Sheet**  
As at 31 December 2022

	2022 £	2021 £
Investments at cost (Market value 31 December 2022 £135,464.09)	69,100.00	69,100.00
Cash at Bank	13,366.14	13,753.84
	<u>82,466.14</u>	<u>82,853.84</u>

Note: There are no liabilities

**Accumulated Fund**

As at 1 January 2022	82,853.84	82,655.53
Less: Deficit for the year	-387.70	198.31
	<u>82,466.14</u>	<u>82,853.84</u>

Ellard Hanson Court

(Part of Worcestershire Masonic Charity Organisation)

Income and expenditure account  
For the year ended 31st December 2022

		2022		Year to December 2021
	£	£	£	£
Income				
License fees			72,040.92	70,353.92
Interest received			1,299.86	8.46
			<u>73,340.78</u>	<u>70,362.38</u>
Less expenditure				
Operating costs				
Water rates	762.66			421.04
Electricity	29,912.67			8,819.36
Warden's salary and relief	7,239.70			11,375.76
Cleaning	1,725.26			1,510.05
Post and Stationery	4.99			-
Council tax	523.16			50.69
				<u>50.69</u>
			40,168.43	22,176.90
Insurance			4,465.07	5,037.34
Repairs and maintenance				
Building maintenance	3,388.67			3,801.62
Grounds Maintenance	12,696.00			
Flat maintenance	133.20			4,185.89
Washer Dryer repairs	431.64			0.00
Lift maintenance	384.91			7,551.86
Fire safety	1,363.80			1,439.76
Window cleaning	1,170.00			1,170.00
Garden maintenance	129.48			33.98
				<u>33.98</u>
			19,697.70	18,183.11
Sundries			504.66	1,455.16
Bank Charges			65.00	0.00
				<u>0.00</u>
			64,900.86	46,852.51
Surplus/(Deficit) for the year to date			<u>8,439.92</u>	<u>23,509.87</u>
Balance Sheet as at 31st December 2022				
Debtors		10,274.55		2.64
Cash in hand		-		-
Bank account		22,997.05		112,512.93
Bank deposit		110,131.74		-
United Trust		81,438.07		79,580.42
WMCO		170,000.00		170,000.00
			<u>394,841.41</u>	<u>362,095.99</u>
Less: Creditors			26,770.61	3,761.80
Net assets			<u>368,070.80</u>	<u>358,334.19</u>
Accumulated fund b/f		263,108.88		238,302.32
Surplus		8,439.92		23,509.87
			<u>271,548.80</u>	<u>261,812.19</u>
Legacy D W Barnett decd			96,522.00	96,522.00
			<u>368,070.80</u>	<u>358,334.19</u>

**Worcestershire Masonic Charity Organisation**  
**Statement of Financial Activities for the**  
**year ended 31 December 2022**

	<u>31.12.2022</u>			<u>31.12.2021</u>		
	Un- Restricted £	Restricted £	Total £	Un- Restricted £	Restricted £	Total £
<b>Incoming resources</b>						
Investment Income	4,314.74	11,592.31	15,907.05	2,543	9,664	12,207
Donations (incl Gift aid)	2,823.05	50.00	2,873.05	3,985	50	4,035
Legacy	18,569.23	-	18,569.23	-	-	-
Charitable activities (Ellard Hanson)	-	72,040.92	72,040.92	-	70,354	70,354
	<u>25,707.02</u>	<u>83,683.23</u>	<u>109,390.25</u>	<u>6,528</u>	<u>80,068</u>	<u>86,596</u>
<b>Resources expended</b>						
Donations	40,240.91	4,165.00	44,405.91	10,227	4,866	15,093
Administration and other costs	6,894.52	66,688.30	73,582.82	5,069	47,528	52,596
	<u>47,135.43</u>	<u>70,853.30</u>	<u>117,988.73</u>	<u>15,296</u>	<u>52,393</u>	<u>67,689</u>
Net Incoming (Outgoing) Resources for the year	(21,428.41)	12,829.93	(8,598.48)	-8,768	27,675	18,907
Unrealised Investment (losses)/gains	-	(44,007.60)	(44,007.60)	-	30,551	30,551
Balances brought forward at 1st January 2022	298,033.00	1,416,826.00	1,714,859.00	306,801	1,358,600	1,665,401
Balances carried forward at 31st December 2022	<u>276,604.59</u>	<u>1,385,648.33</u>	<u>1,662,252.92</u>	<u>298,033</u>	<u>1,416,826</u>	<u>1,714,859</u>

**WMCO BALANCE SHEET AS AT 31st DECEMBER 2022**

		<u>31.12.2021</u>
	£	£
<b>FIXED ASSETS</b>		
Freehold Property -	643,731.00	643,731
Office Equipment	1,224.00	-
Investments	<u>348,990.84</u>	<u>465,146</u>
	993,945.84	1,108,877
<b>Current Assets</b>		
Debtors	91,543.06	83,783
Cash at Bank	622,862.69	539,202
Stock of Merchandise	<u>416.39</u>	<u>-</u>
	714,822.14	622,985
<b>Liabilities</b>		
Creditors	<u>46,515.06</u>	<u>17,003</u>
Net current assets	<u>668,307.08</u>	<u>605,982</u>
<b>Total Net Assets</b>	<u><b>1,662,252.92</b></u>	<u><b>1,714,859</b></u>
<b>Unrestricted Funds</b>		
General	176,603.77	198,031
Designated - Bromsgrove	<u>100,000.00</u>	<u>100,000</u>
	276,603.77	298,031
<b>Restricted Funds</b>		
<b>Yorke-Brooks:</b>	26,452.13	28,525
<b>Ellard Hanson Court</b>	1,013,069.32	1,002,850
<b>Heritage Fund</b>	337,047.20	374,797
<b>Other Restricted Funds</b>	<u>9,080.50</u>	<u>10,656</u>
<b>Total Funds</b>	<u><b>1,662,252.92</b></u>	<u><b>1,714,859</b></u>



**Masonic**  
Charitable Foundation

**Our impact 2021/22**

# In Worcestershire Local community



**20**

grants awarded  
to charities



**£30,790**

in grants given  
to charities



## Individuals and families

**71** disadvantaged and vulnerable Freemasons or their families supported with grants totalling **£202,203**



**10**

people accessed our  
free and confidential  
counselling service



**£121,893**

was awarded to help  
cover the costs of  
everyday living



**£51,760**

was provided to  
support health, care  
and wellbeing



**£28,551**

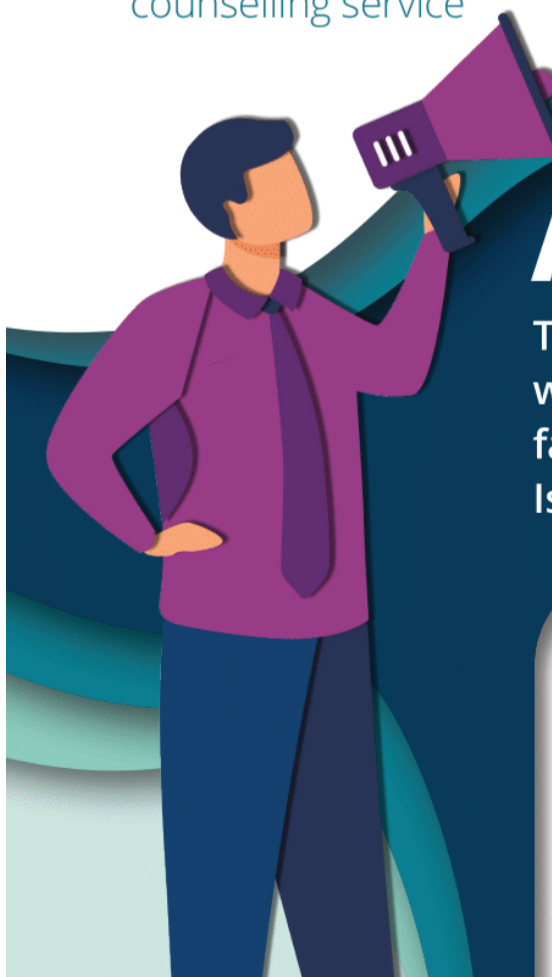
was given to help  
support the education  
of children and  
young people

## And beyond

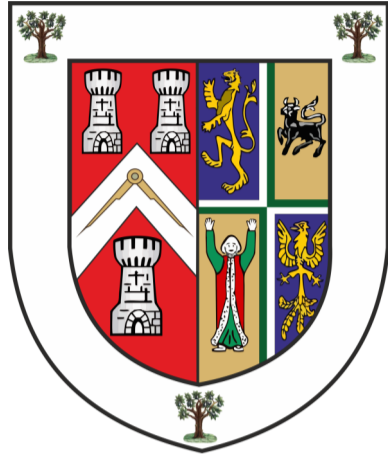
This year we awarded a total of **£19.6M** to support the work of **726** charities and help **3,281** individuals and families across England, Wales, the Channel Isles, the Isle of Man and internationally.

**Read our full Impact Report!**

Scan the QR code using  
your phone camera or visit  
[impact.mcf.org.uk/poster](https://impact.mcf.org.uk/poster)







Provincial Grand Secretary: James FP Mulligan. PPrJGW.

Provincial Office,  
94 Birmingham Road,  
Bromsgrove,  
Worcestershire,  
B61 0DF



01527 879300



Provincial@WorcestershireFreemasons.com



<https://www.facebook.com/worcsasons>



#WorcsMasons



[WorcestershireFreemasons.com](http://WorcestershireFreemasons.com)